

Key Features of this Holiday Home

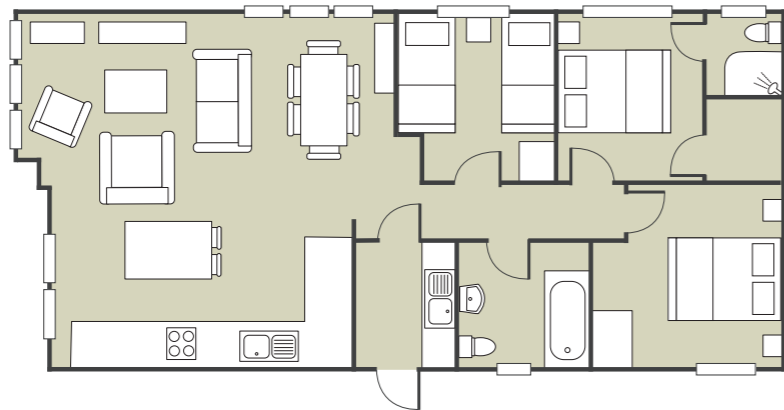
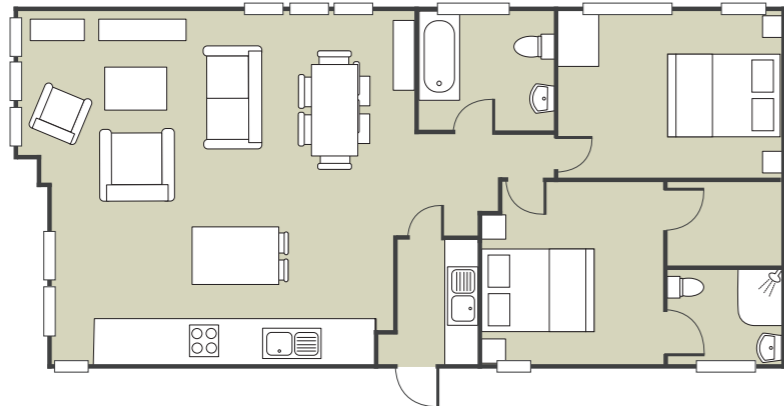
- ✓ Sliding patio doors leading to outdoor space
- ✓ Spacious utility area upon entry
- ✓ Contemporary colour scheme throughout
- ✓ Fully fitted kitchen with high-quality integrated appliances, incl. 4-burner gas hob, oven, microwave, fridge/freezer, dishwasher & dual washer/dryer
- ✓ Dining table with high-backed chairs
- ✓ Storage to loft area within the eaves
- ✓ Shower en-suite and walk-in wardrobe to master bedroom
- ✓ Large, low maintenance decking with stunning views

Benefits of Ownership

- 🔑 Simple 'turnkey' holiday home ownership
- 👤 NO stamp duty to pay
- ⚖️ NO legal fees to pay
- £ A range of financing options including equity release, part-exchange and hire purchase
- 👥 Fully managed letting service available
- 📅 Holiday at any time of year with no closed season



The Pinehurst
40 x 20
2 Bedroom



The Pinehurst
40 x 20
3 Bedroom



For more information, or to arrange your personal viewing appointment, please call Jeremy on 01726 843 425 or email: jeremy.reuben@swholidayparks.co.uk

Important notice: These particulars do not form part of any offer or contract and must not be relied upon as statements or representations of fact. Any areas, measurements or distances are approximate. The text, photographs and plans are for guidance only and are not necessarily comprehensive.

All accommodation at Seaview Gorran Haven is sold for HOLIDAY USE ONLY and must not be used as a primary place of residence. Evidence of a permanent address is required before purchasing and on-going annual checks of your permanent home address are a compulsory requirement of ownership.



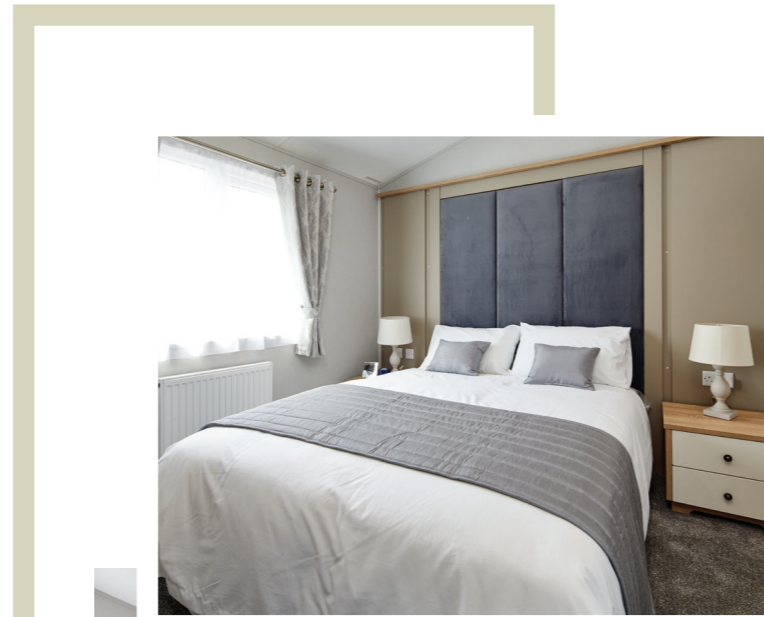
southwestholidayparks.co.uk
01726 843 425

Welcome to The Pinehurst

The Pinehurst holiday lodge captures modern practical living with exceptionally well thought out design. With a stunning contemporary colour scheme, no detail has been left out – so from day one you can start living out your holiday dreams knowing that your investment has been worth every penny.

Entering through the spacious utility area, the Pinehurst lodge follows the large, open plan living space through to a generously sized, feature-packed kitchen that includes high-quality integrated appliances, a double larder, and a gorgeous island unit which is perfect for early morning wakeups with the family.

One of the best things about the Pinehurst is the amount of storage; making great use of smart storage in the eaves, it even boasts loft storage ensuring a clutter free holiday retreat! And with spacious bedrooms coming complete with freestanding furniture, as well as a walk-in wardrobe and shower en-suite to the master bedroom, no compromises have been made when it comes to comfort or style in this striking holiday lodge.



Lodge Location

Our stunning Pinehurst lodge is situated on our brand-new Sealawns development. With a large decking area, this luxury holiday home is perfect for taking in the beautiful unspoilt views of the South Cornwall coast. This holiday home also benefits from a double-parking space and a 12-month holiday season means it can be enjoyed at any time of the year.

Why Choose Seaview Gorrán Haven?

Seaview Gorrán Haven is surrounded by a patchwork of fields, interrupted by groves of trees and the deep blue of the ocean, making it the perfect location to escape from the hustle and bustle of everyday life.

Seaview's secluded location doesn't mean that you're cut off from the host of local attractions nearby however; you're spoilt for choice when it comes to exploring the beauty of Cornwall. Enjoy an early morning jog down to the sandy beaches of Hemmick, discover the Lost Gardens of Heligan, Caerhayes Castle and the world-famous Eden Project or spend a leisurely day exploring the stunning villages of Gorrán Haven and Mevagissey just a short drive away.









As an Owner at Seaview, you'll also have full use of our five-star leisure facilities, including a heated outdoor swimming pool and dog-friendly park areas – so no matter the weather, you can enjoy your holiday home and its gorgeous location.



Your Holiday Home Includes

-  Delivery, siting and all utilities connected
-  All kitchen appliances
-  High-quality freestanding furniture
-  Digital TV aerial and satellite connection
-  Manufacturer's Warranty
-  Large, low maintenance decking with glass front

Park Features & Benefits

-  5* Visit England graded park
-  Full 12-month holiday season
-  Stunning sea views
-  Outdoor heated swimming pool
-  Children's play areas
-  Complimentary golf at Carlyon Bay
-  Close to the South West Coast Path and beautiful sandy beaches
-  Free and unlimited hi-speed WIFI

